



### HIGHLIGHTS:

- Fort Uncompahgre Volunteer Opportunities
- Barlow Homestead Preservation on the Uncompahgre Plateau
- Kids in the Woods
- Silver Thread Scenic Byway Interpretive Signs Pullout
- Escalante Canyon Historic Structures Assessment
- Unaweep-Tabeguache Scenic Byway Pullouts Recreation Signing

## Meet Me at the Fort (Uncompahgre) in 2015!

IAWC held a series of stakeholder meetings during 2014 to determine the public interest in operating Fort Uncompahgre. The group met several times and developed a vision, mission and goals. These were presented to the City of Delta with a request to the Delta City Council to enter into a partnership with IAWC to allow us to operate Fort Uncompahgre.

Fort Uncompahgre brings out the flavor and desire to experience the Old West.

- The Fort is a symbol and story of the West

- It is the only Fort on the Old Spanish Trail network

- Delta County has the most intact, visible section of the Old Spanish Trail

- The undeveloped landscape inspires imagination of life back when the West was being explored and settled

Our vision is to establish a National Trails Interpretive Center in Delta, Colorado at the existing Fort Uncompahgre, a recreation of the original Fort.



We are currently seeking volunteers to establish the Friends of Fort Uncompahgre and to help us in operating this summer.

To learn more, contact Chris Miller at 970 874-6695.

**Open house at Fort Uncompahgre in May, 2014. The Fort will be open this coming season.**

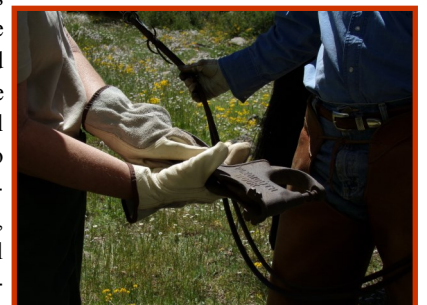
## H.F. Barlow Homestead Archeologic Dig



**Leigh-Ann Hunt,  
GMUG Forest  
Archeologist**

During the summer of 2014, archaeologists from Alpine Archaeological Consultants, Inc., the USFS – Grand Mesa, Uncompahgre, and Gunnison National Forests, and volunteers from the Colorado Archaeological Society – Chipeta Chapter, conducted an excavation at a historic homestead in the Uncompahgre National Forest. The homestead was located on Iron Springs Mesa on the southern end of the Uncompahgre Plateau and was occupied between 1906 and 1930 by Henry F. and Mary Barlow and their family. The excavations were supported by a Colorado State Historical Fund Grant, administered by the IAWC, was designed to address specific questions about the life of the Barlow family.

A public presentation discussed the results of the 2014 excavation, and examined the influence that regional, national economic and social trends had on the family, and how those trends are seen in the archaeological record.



**Old hand rivet recovered at site.**

# IAWC Dates

## Upcoming Events:

- Annual Board Meeting - March 24th
- School Tours at the Fort - April & May
- Fort Open to Public - June
- National OST Board Summer Meeting - June @ the Fort
- 2-day Workshop - Captain Smiths, Escalante Canyon - TBD
- Historic Assessments - Escalante Cabins - June
- Escalante Field Trip - Open to the Public - September



Need OHV permits, maps, nature books? IAWC retail stores are located for your convenience at the US Forest Service Offices in Delta and Gunnison, CO.

Open Monday-Friday 8-5 pm.

Or check us out on-line at [www.intercolorado.org](http://www.intercolorado.org).

### Websites:

- [www.wcinterp.org](http://www.wcinterp.org)
- [www.hangingflume.org](http://www.hangingflume.org)
- [www.utbyway.com](http://www.utbyway.com)



**IAWC Book Store**  
located in the Delta  
Forest Service Office  
970-874-6600

**IAWC  
Board Field  
Trip Apr. 17-  
Old Spanish  
Trail  
Between Delta  
and Grand  
Junction**

# Membership News

## Join the IAWC Interpretive Association of Western Colorado

You can make a lasting difference in the future of special places deserving protection by joining the Interpretive Association of Western Colorado today. With your membership dues, you will receive our periodic email newsletter, annual

report, invitations to special events, and your donation is tax deductible!

For on-line membership and information go to [www.intercolorado.org](http://www.intercolorado.org)

We are also looking for volunteers for Fort Uncompahgre!



**Steven Baker, Century Research, Inc - Montrose, CO presents "Great Delta Gateway from Juan Rivera in 1765 to the Modern Search for Robidoux's Post"**

# Kids in the Woods

The Interpretive Association of Western Colorado was responsible for dispersing \$6500 of the MKIW grant funding. This funding was used primarily to purchase components for snow science and weather trunks and wildlife trunks (skulls, tracks, scat, and laminated animal track pamphlets). Fifteen sets of snow shoes were purchased and used by adults who assisted students on skis. Approximately \$2000 was used to purchase additional ski sets. Miscellaneous purchases included components for the ski trailer (spare tire, jack, door locks), tubs for snow shoe storage and science equipment, and travel expenses for a student intern filming the winter ecology field days.

Over 400 students from Delta County, San Miguel and Ouray County Schools participated in cross country skiing through 4-5 learning stations focused on various aspects of winter ecology during February 2014. During these field days both the ski equipment and science trunks were used.



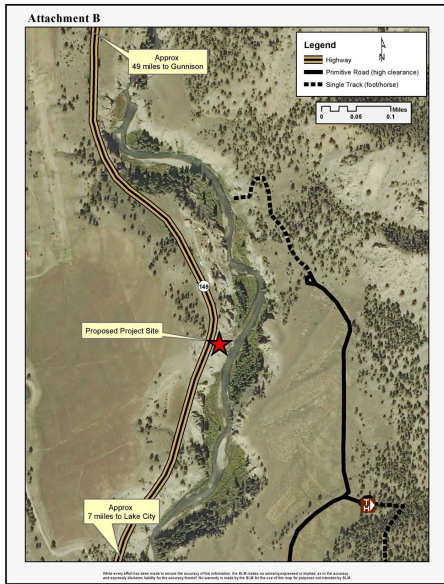
**Anita Evans, GM Nordic Council discusses snow layers**



**Matt Dare, GMUG Biologist discusses CO snow pack .**



# Silver Thread Scenic Byway Interpretive Sign Pull Outs



**Location map of the Silver Thread Lake Fork pull out.**

The Silver Thread Scenic Byway was recently extended to include State Highway 149 from Lake City, CO north to the junction of US Highway 50 near Gunnison, CO. Interpretive pullouts were developed at multiple sites along the highway corridor, and interpretive signs were installed in the spring of 2014. The Lake Fork Overlook was developed at an existing site near mile marker 81 on the east side of Highway 149 overlooking the Lake Fork of the Gunnison River Canyon. With CDOT approval, Hinsdale County’s road crew (as a cooperating partner) provided gravel, grading and boulder placement delineating the overlook. The interpretive panel describes the journey of water across the landscape from the headwaters in the San Juan Mountains all of the way to the Gulf of California; since installation, the overlook has been popular among byway travelers. Placement of boulders around the overlook provides for vehicle safety, and has been successful at keeping vehicles from getting too close to the canyon rim. However, the loose shale that comprises the bedrock of the canyon is potentially a slipping hazard for pedestrians with disastrous consequences as the fall to the river below is approximately 150 feet. The IAWC is proposing to construct a safety fence around the exposed perimeter of the overlook that will keep visitors away from the canyon edge. It is of an architectural style that matches the visual identity of the Scenic Byway with the style of the safety fence found at North Clear Creek Falls (another stop along the Silver Thread Scenic Byway).



**View from the Lake Fork Overlook on Hwy 149.**

## Escalante Canyon Historic Assessments



**Captain Smith Homestead**

Captain Smith Tract is just up the creek from East Walker. Captain Harry Smith was a tombstone carver and a veteran of the Civil War. “Rock Man” that he was, Captain Smith chose for his home site a huge fin of a rock, landing on edge and half buried in talus. He used it as a wall for his main cabin. Captain Smith’s Cabin was designated to Colorado Register of Historic Places in 1997.



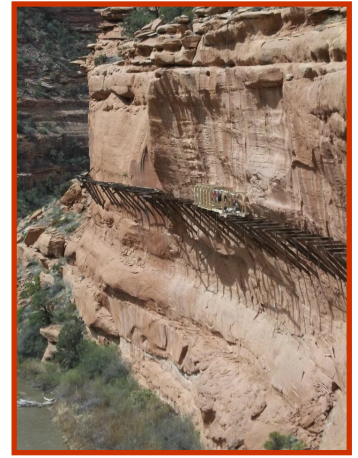
**Walker Cabin**

Walker Cabin and the two buildings on the Smith property are the only buildings within the canyon known to survive from the homesteading period. All three tracts were purchased in the 1950’s by the Colorado Division of Wildlife.

East Walker Tract straddles 4 miles of Escalante Creek. The ruins of the Walker cabin are still standing and available to the public for viewing. Henry Walker, a skilled bricklayer, built the cabin in 1911. Walker Homestead was listed on the Colorado Register of Historic Places in 1997.

# Unaweeep-Tabeguache Scenic Byway Project to Improve Pull Outs, Signing

IAWC was successful in working with the Montrose BLM Field office to get \$89,540 in TAP funds for the UT Byway . The proposed project will improve pull-outs and scenic sites along the San Miguel and Hanging Flume corridors on the UT Byway within the BLM Uncompahgre Field Office. The project will replace the chain link fence at the Hanging Flume overlook and also includes installing signs for six recreation area along the San Miguel River Corridor and developing a trail to hike and view the Hanging Flume.



**Hanging Flume  
construction (photo  
by Gen9Productions)**

## Gunnison Water Wheel to be Designated as Delta County Historic Landmark



located in the U.S. Forest Service Supervisors  
Office

2250 U.S. Hwy 50

Phone: 970-874-6695

Fax: 970-874-6698

E-mail: [info@interpcolorado.org](mailto:info@interpcolorado.org)

Because people and places matter, IAWC is dedicated to preserving and celebrating the rich stories, legacies, and landscapes of Western Colorado. At the heart of our projects is the preservation of Western Colorado's cultural heritage and landscapes. Interpretive materials enhance people's experience and understanding and result in increased tourism, jobs and civic enrichment.

Visit us on the web  
[www.interpcolorado.org](http://www.interpcolorado.org)